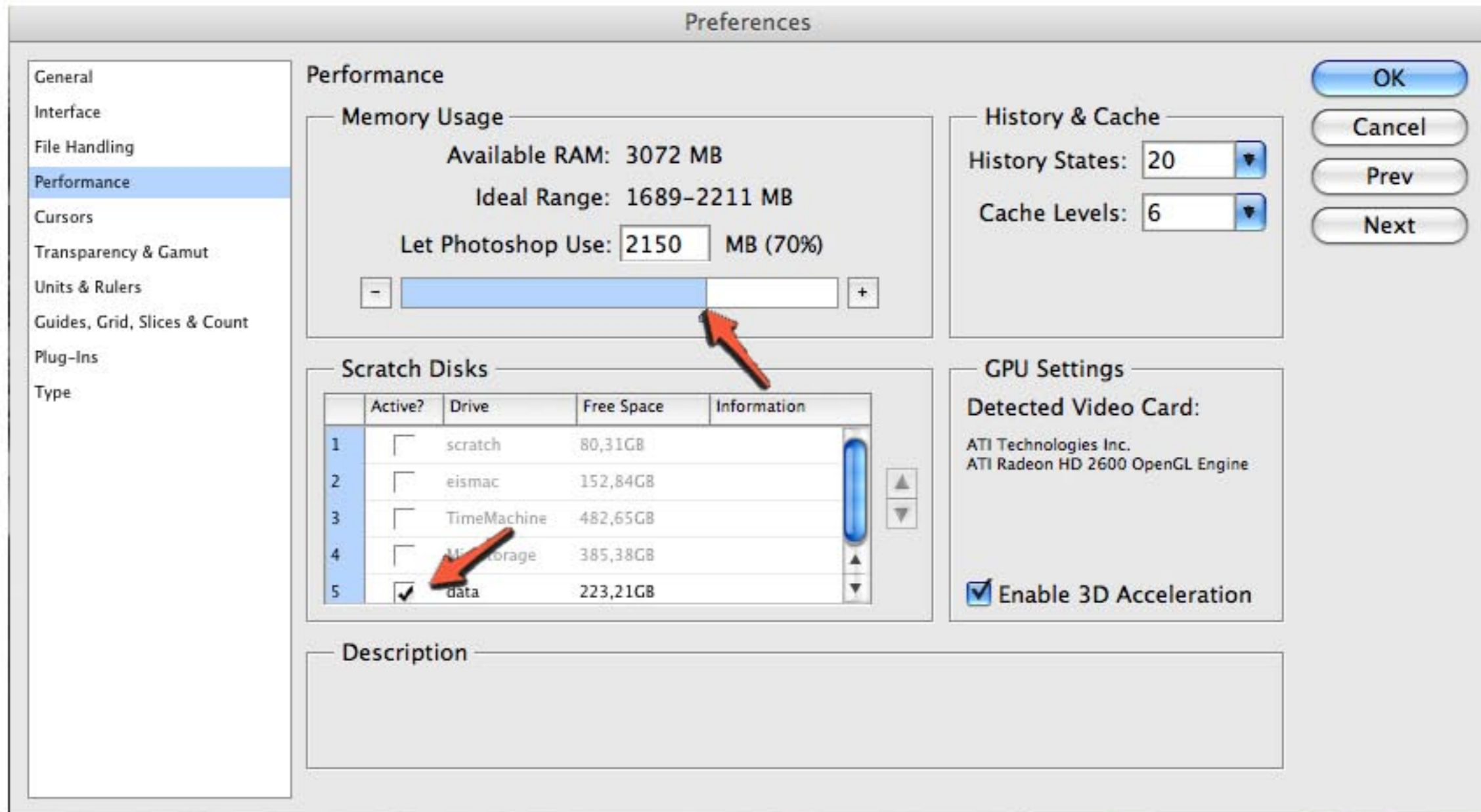


Photoshop Tip of the Month: Improve Photoshop's performance – without buying extra RAM.



If your computer's memory often reaches its limits when you're working in Photoshop, you might want to take a close look at the performance settings in the Preferences window, particularly at the "Scratch Disks" settings. This section allows you to allocate volumes, so Photoshop can swap some of the work load. You can also define the order in which you want Photoshop to utilize these drives. Make sure that your boot drive isn't at the top of the list. Ideal are fast internal or external, physical drives (not just partitions on your boot drive) with sufficient space. A performance increase is of course always welcome, but this should be especially helpful if you're currently not making use of your computer's best possible RAM configuration.